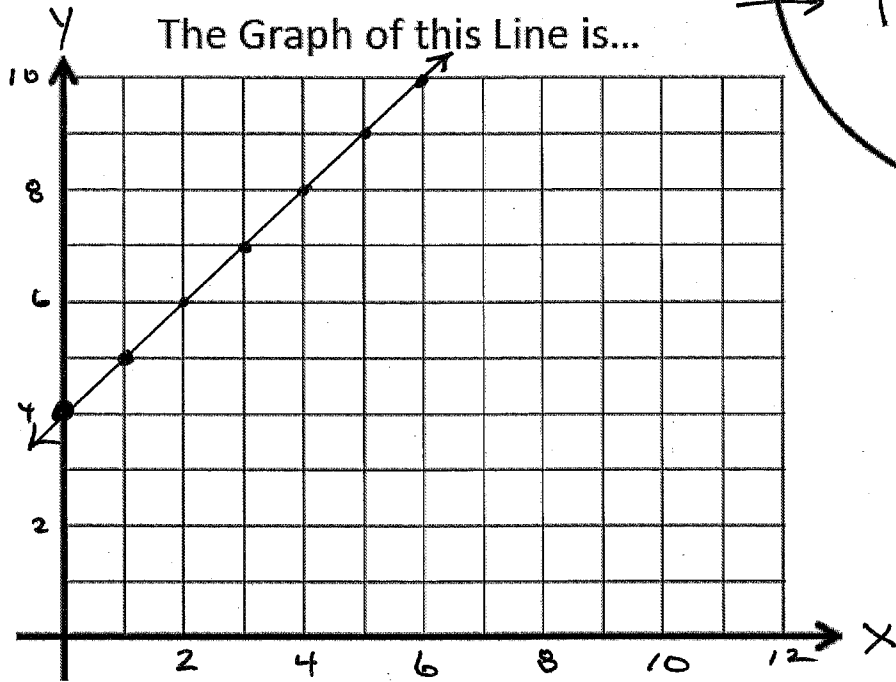


The y-intercept of this line is...
 $(0, 4)$

GIVEN
The equation of this line is...
 $y = x + 4$

The slope of this line is...
 $\frac{1}{1} = 1$

The unit rate of this line is...
 $1 = \boxed{1}$



X	Y
0	4
1	5
2	6
3	7

The y-intercept of this line is...

$(0, 9)$

The equation of this line is...

$$y = -\frac{4}{3}x + 9$$

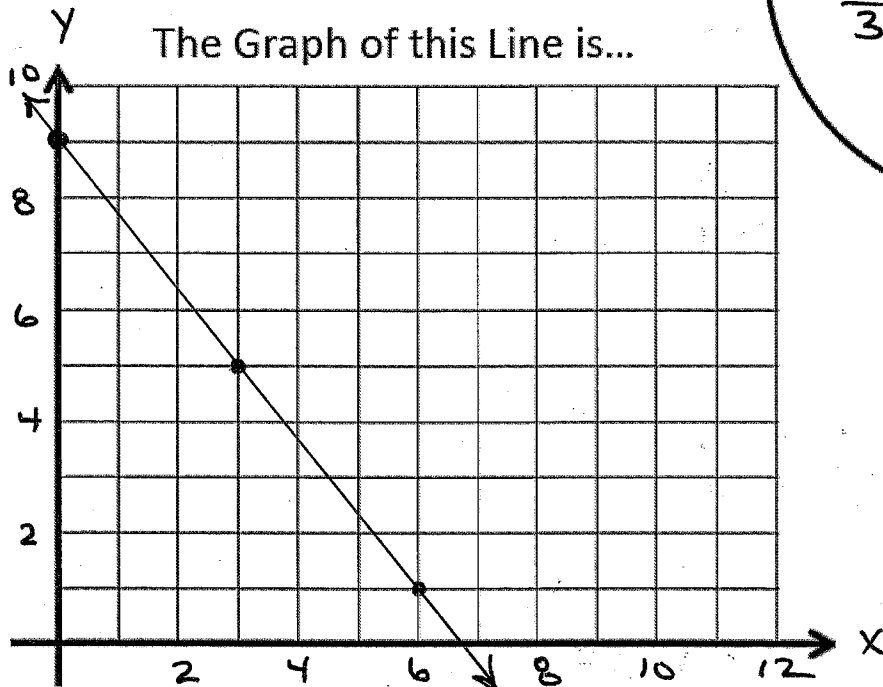
The slope of this line is...

$$-\frac{4}{3}$$

The unit rate of this line is...

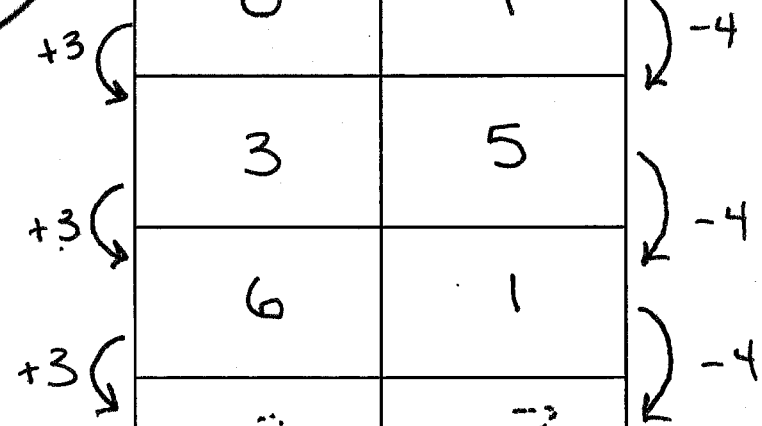
$$\frac{\Delta y}{\Delta x} = -\frac{4}{3} = \boxed{-1.\bar{3}}$$

The Graph of this Line is...



X	Y
0	9
3	5
6	1
9	-3

GIVEN



The equation of this line is...

$$y = \frac{3}{2}x + 2$$

The slope of this line is...

$$\frac{3}{2}$$

The y-intercept of this line is...

$$(0, 2)$$

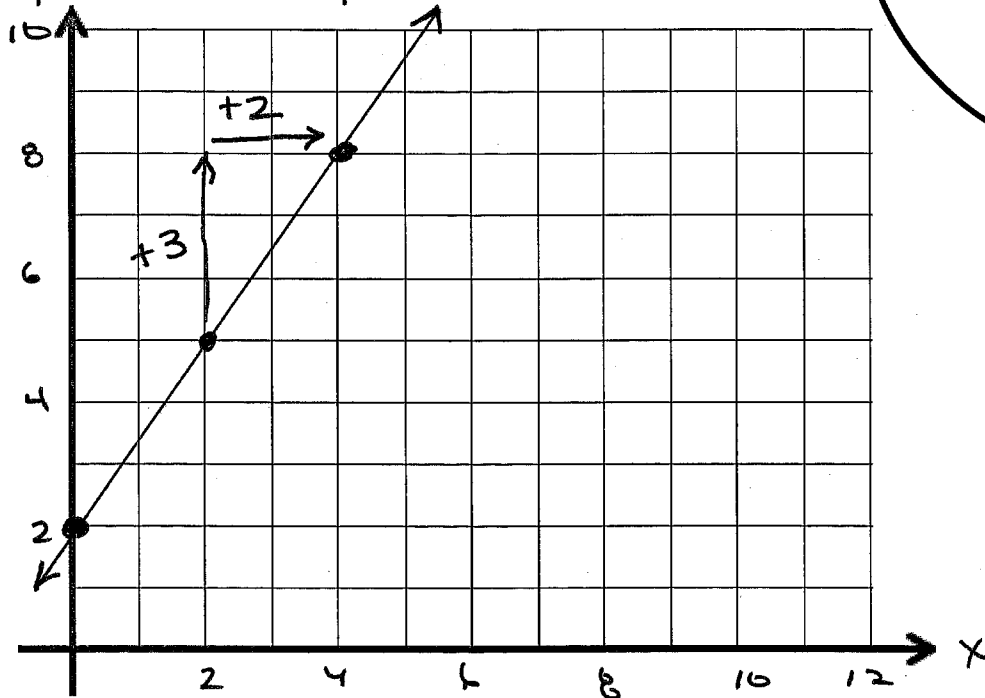
The unit rate of this line is...

$$\frac{3}{2} = \boxed{1.5}$$

RISE
RUN

GIVEN

The Graph of this Line is...



X	Y
0	2
2	5
4	8
6	11